

# Holiday Inn Norwich



[View the Access Guide](#)

Ipswich Road, Norwich, Norfolk NR4 6EP

0871 942 9060

[www.ihg.com/holidayinn/hotels/gb/en/norwich/nwinf/hoteldetail](https://www.ihg.com/holidayinn/hotels/gb/en/norwich/nwinf/hoteldetail) (<https://www.ihg.com/holidayinn/hotels/gb/en/norwich/nwinf/hoteldetail>)

Guide Last Updated: 13/02/2018

[Something changed? \(/contact/something\\_changed?destination=/access-guide/kew-green/holiday-inn-norwich\)](/contact/something_changed?destination=/access-guide/kew-green/holiday-inn-norwich)



Google

(<https://maps.google.com/maps?ll=52.60118,1.278966&z=14&t=m&hl=en-US&gl=US&mapclient=apiv3>)

Map data ©2018 Google

## Access Guide



[Explain these icons \(/our-icons\)](#)

[Expand all](#) [Collapse all](#)

### Hotel Introduction

[Collapse -](#)

#### Related Access Guide(s)

[Collapse -](#)

- [For the Holiday Inn Norwich - Leisure Facilities DisabledGo access guide please click here \(new tab\) \(https://www.disabledgo.com/access-guide/holiday-inn/holiday-inn-norwich---leisure-facilities\).](https://www.disabledgo.com/access-guide/holiday-inn/holiday-inn-norwich---leisure-facilities)

#### Hotel Information

[Collapse -](#)

- The hotel has its own parking facilities.
- This hotel has its own restaurant located on the second floor.
- Conference/meeting facilities are available.
- The conference/meeting facilities are located on the first and second floors.

#### Room Information

[Collapse -](#)

- The hotel has 119 rooms in total.

- There is an/are accessible room(s) within the hotel.
- The accessible room(s) is/are located on the second floor.
- The hotel has 3 accessible room(s) with accessible ensuite facilities.
- There is/are 3 accessible room(s) with a bath.
- There is an/are adjoining room(s) available for the accessible room(s).
- The accessible rooms are 29m - 35m from the hotel entrance.
- There is a/are standard room(s) available on the ground floor.
- There is an/are adjoining room(s) available for the standard room(s).
- Rooms on other floors are accessed via stairs.

#### Auxiliary Aids

Collapse -

- Vibrating pillows with flashing beacons are available on request.
- Bed raisers are not available on request.
- Bath mats are available on request.
- All televisions have subtitles available.

#### Comments

Collapse -

- This hotel is built on a hill.
- The floors are numbered 1, 2 and 3.
- The main entrance gives direct access to the second floor.
- There is level access to the second floor, including the reception desk, all accessible rooms, some standard rooms, the restaurant/bar and some conference rooms.

### Getting Here

Collapse -

#### By Road

Collapse -

- This hotel is located on the outskirts of Norwich, just off the A47. The hotel is located on the A140, Ipswich Road.
- This hotel has its own car park which is free for all users.

#### By Bus

Collapse -

- There is a bus stop within 150 metres of the hotel.
- The nearest bus stop is located outside the hotel on Ipswich Road.
- [For more information on buses in the South East and Anglia please click here \(opens new tab\) \(http://www.travelinesoutheast.org.uk\).](http://www.travelinesoutheast.org.uk)

#### By Train

Collapse -

- The nearest Railway Station is Norwich.
- Norwich Station is situated in the centre of Norwich, located approximately 3 miles from the hotel. There are bus and taxi routes to the hotel from the station.
- [For more information on National Rail please click here \(opens new tab\) \(http://www.nationalrail.co.uk/stations/nrw/details.html\).](http://www.nationalrail.co.uk/stations/nrw/details.html)

### Getting Help and Assistance

Collapse -

- There is a member of staff available for help and assistance.
- Staff receive disability awareness/equality training.

- Staff do not receive deaf awareness training.
- There is not a member of staff trained in British Sign Language.
- British Sign Language interpreters cannot be provided on request.
- The alternative formats documents can be provided in include; large print on request.
- There is an assistance dog toilet or toileting area at the venue/near by.
- The assistance dog toilet or toileting area is located on the grass areas in front of the hotel.
- Water bowls for assistance dogs are available.
- There are mobility aids available.
- The mobility aids available include wheelchairs.

## Parking

Collapse -

### Parking

Collapse -

- The hotel does have its own parking facilities.
- The car park is located at the front of the hotel.
- The car park type is open air/surface.
- The car park does not have a height restriction barrier.
- The car park does not have a barrier control system.
- The car park surface is tarmac.
- There is a/are Blue Badge parking bay(s) available.
- The Blue Badge bay(s) is/are clearly marked and signposted.
- There is/are 6 designated Blue Badge parking bay(s) within the car park.
- The dimensions of the designated Blue Badge parking bay(s) surveyed are 246cm x 697cm (8ft 1in x 22ft 10in).
- There is a 120cm hatched zone around the Blue Badge parking bay(s).
- Parking spaces for Blue Badge holders do not need to be booked in advance.
- Clearly marked/signposted parent and child parking bays are not available.
- All parking spaces are provided on a first come first served basis.

### Paying

Collapse -

- There are not parking charges for the car park.

### Access from the Car Park

Collapse -

- The route from the car park to the entrance is accessible to a wheelchair user with assistance.
- Assistance may be required because there is/are dropped kerbs.
- The entrance is clearly visible from the car park.
- The surface on the approach to the entrance is tarmac.
- There is not a road to cross between the car park and the entrance.
- There is tactile paving on dropped kerbs between the car park and the entrance.
- The nearest designated Blue Badge parking bay is approximately 8m (8yd 2ft) from the hotel entrance.

### Drop-off Point(s)

Collapse -

- There is not a/are not clearly marked drop-off point(s).



1



2



3



4



5



6

Outside Access (Hotel Entrance)

Collapse -

Entrance

Collapse -

- This information is for the entrance located at the front of the hotel.
- The entrance area/door is clearly signed.
- There is step free access at this entrance.
- There is a canopy or recess which provides weather protection at this entrance.
- The entrance door(s) does not/do not contrast visually with its immediate surroundings.
- The bell/buzzer is not in a suitable position to allow wheelchair users to gain access.
- The height of the bell/buzzer is 140cm (4ft 7in).
- The main door(s) open(s) automatically (towards you).
- The door(s) is/are double width.
- The width of the door opening is 141cm.
- There is a small lip on the threshold of the entrance, with a height of 2cm or below.
- There is a second set of doors.
- The door(s) open(s) automatically.
- The door(s) is/are double width.
- The width of the door opening is 162cm.
- There is a member of staff available for assistance at this entrance.

Comments

Collapse -

- This entrance gives direct access to the second floor.
- The main doors are locked between 01:00 and 05:00.
- There is a telephone on the wall to the left of the entrance (shown in photograph 4).
- The height of the telephone is 141cm.
- This telephone is used to obtain assistance from the reception desk and to gain entry to the hotel when the doors are locked.



1



2



3



4



5

Reception (Main Reception)

Collapse -

Reception

Collapse -

- The reception point is located ahead as you enter the hotel.
- The reception point is approximately 5m (5yd 1ft) from the hotel entrance.
- The reception area/desk is clearly visible from the entrance.
- There is step free access to the reception point.
- There is a clear unobstructed route to the reception point.
- There are no windows, TVs, glazed screens or mirrors behind the reception point which could adversely affect the ability of someone to lip read.
- The reception counter is not placed in front of a background which is patterned.
- The lighting levels at the reception point are good.
- The height of the reception counter is high (110cm+).
- There is sufficient space to write or sign documents on the counter.
- There is not a lowered section of the counter.
- The counter is staffed.
- Clipboards can be provided to anyone who is unable to use the desk.
- There is a hearing assistance system at the reception point.
- The type of system is a fixed loop.
- The hearing assistance system is not signed.
- Staff are trained to use the system.
- Signs and universally accepted symbols or pictograms, indicating lifts, stairs, WCs, circulation routes and other parts of the building are provided in the reception area.
- The type of flooring in the reception area is carpet.

Reception Waiting Area

Collapse -

- There is a waiting area close to the reception point.
- Access to the waiting area is unobstructed.
- The seats do not have armrests.
- There is sufficient space for a wheelchair user to use the waiting area.



1



2



3



4

Reception (Customer Relations Manager's Desk)

Collapse -

Reception

Collapse -

- The reception point is located to the right as you enter via the main hotel entrance.
- The reception point is approximately 5m (5yd 1ft) from the hotel entrance.
- The reception area/desk is clearly visible from the entrance.
- There is step-free access to the reception point.
- There is a clear unobstructed route to the reception point.
- There are no windows, TVs, glazed screens or mirrors behind the reception point which could adversely affect the ability of someone to lip read.
- The reception counter is not placed in front of a background which is patterned.
- The lighting levels at the reception point are good.
- The height of the reception counter is low (76cm or lower).
- There is sufficient space to write or sign documents on the counter.
- There is not a clear knee recess beneath the lowered section of the counter.
- The counter is staffed.
- Clipboards can be provided to anyone who is unable to use the desk.
- There is not a hearing assistance system at the reception point.
- Signs and universally accepted symbols or pictograms, indicating lifts, stairs, WCs, circulation routes and other parts of the building are provided in the reception area.
- The type of flooring in the reception area is carpet.

Comments

Collapse -

- The Customer Relations Manager's desk is used for any guest related issues.
- The desk shares the same seating area as the main reception desk.



1



2

Getting Around

Collapse -

Access

Collapse -

- There is step-free access throughout the second floor.
- There is a slight slope, with no handrails, for access to the accessible and standard toilets.
- This slope is on the second floor, in the corridor to the left of the main reception desk. This slope is shown in photographs 1 and 2.

Circulation

Collapse -

- There are doors in corridors/walkways which have to be opened manually.
- The type of flooring in corridors/walkways is carpet and laminate.
- There is some flooring in corridors/walkways which includes patterns or colours which could be confusing or look like steps or holes to some people.
- There is some flooring in corridors/walkways which is shiny and could cause issues with glare or look slippery to some people.
- There is good colour contrast between the walls and floor in the majority of corridors/walkways.
- There is a mixture of seating with and without armrests at regular intervals.
- The lighting levels are varied.
- Access to other floors/levels is via stairs.

Signage

Collapse -

- Wayfinding signage is provided.
- The colour, design and typeface of signs is consistent throughout the building.

## Audio

Collapse -

- This venue does play background music in public areas.
- Music is played in the reception and restaurant/bar areas.
- There is a hearing assistance system in the public areas of the building.
- The system is a fixed loop.
- The hearing assistance loop is located at the main reception desk and at the bar. There is also a fixed hearing loop in the Yeoman A and B meeting rooms.



1



2



3



4



5



6



7



8

## Eating and Drinking (Restaurant/Bar)

Collapse -

- The following information is for the restaurant/bar.
- The restaurant/bar is located on the second floor, to the right as you enter the hotel entrance.
- There is step free access to the restaurant/bar.
- Full table service is available.
- Food and/or drinks can be ordered from the service counter.
- There is a hearing assistance system.
- The system is a fixed loop.
- The hearing assistance system is not signed.
- Staff are trained to use the system.
- There is step free access within the restaurant/bar.
- There is ample room for a wheelchair user to manoeuvre.
- This area does play background music.
- The type of flooring in this area is carpet and laminate.
- No tables are permanently fixed.
- Some chairs are permanently fixed.
- Some chairs have armrests on both sides.
- The nearest table is approximately 1m from the entrance/opening.
- The nearest table is approximately 2m from the till/counter.
- The distance between the floor and the lowest table is 66cm.
- The distance between the floor and the highest table is 99cm.
- The standard height for tables is 70cm.
- Plastic/takeaway cups are available.
- Plastic/takeaway cutlery is not available.
- Drinking straws are available.
- There are hand held menus and menu boards/signs available.



- Menus are not available in Braille.
- Menus are not available in large print.
- Picture menus are not available.
- Menus are clearly written.
- Menus are presented in contrasting colours.
- The type of food served here is hot and cold meals and snacks.
- The lighting levels are good.

Comments

Collapse -

- There is a raised seating area within the restaurant/bar (shown in photograph 7).
- This seating area is accessed by a medium height step (14cm).
- There are no handrails.
- Some of the fixed seating in the restaurant/bar is also accessed by a medium height step (14cm) (shown in photograph 8).
- This step does not have handrails.
- All of the raised areas can be easily avoided.



1



2



3



4



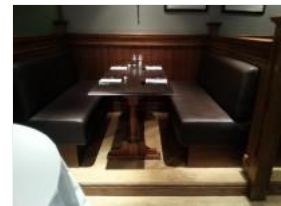
5



6



7



8

Accessible Room(s) (Rooms 201, 202 and 206)

Collapse -

Accessible Room Information

Collapse -

- The details in this section relates to the accessible room(s) with a lowered bath.
- This type of accessible room is located on the second floor.
- There is step free access to this type of accessible room.
- All accessible rooms of this type have similar specifications.
- The ensuite transfer space for the accessible rooms varies from left to right.
- Guests need to open a door between the entrance and the room(s).
- The narrowest width of the corridor leading to the room surveyed was 132cm.

Bedroom Features

Collapse -

- The accessible room surveyed is located on the second floor, in the corridor to the rear right as you enter the hotel entrance.
- The accessible room surveyed at the time of the visit was Room 206.
- There is step free access to the accessible room surveyed.
- There is numbered signage on or near the accessible room door.
- The door is manual with a key card lock.
- The fob/card reader height is 113cm.
- The width of the door is 85cm (2ft 9in).



- There are lowered spy holes available.
- The bed type is double.
- The bed height is not adjustable.
- The height of the bed is 58cm (1ft 11in).
- The measurement between the bed base and floor is 13cm (5in).
- The bed is moveable.
- The room does have an unobstructed minimum turning space of 150cm x 150cm next to the bed.
- The height of the desk is 76cm.
- The desk is not height adjustable.
- The desk knee recess does not have the recommended dimensions of 70cm (height) x 50cm (depth).
- The height and depth of the knee recess is 71cm x 46cm.
- The room surveyed had a height adjustable chair with armrests and an armchair.
- Wardrobes have been adapted to allow use from a seated position.
- Light switches are between 75cm and 120cm (4ft) from floor level.
- Electric sockets are between 40cm and 100cm (4ft) from floor level.
- The window control type(s) for the room is a/are standard lever(s).
- There is an emergency alarm in the room.
- The emergency pull cord alarm is within reach and fully functional.
- The emergency alarm rings to reception.
- There is a flashing fire alarm beacon within the room.
- The type of flooring is carpet.

#### Ensuite Facilities

Collapse -

- The ensuite door opens outwards.
- The door weight is heavy.
- The door is locked by a twist lock.
- The width of the door to the ensuite is 86cm (2ft 10in).
- The dimensions of the ensuite are 226cm x 266cm (7ft 5in x 8ft 9in).
- The ensuite does have an unobstructed minimum turning space of 150cm x 150cm in front of the toilet seat.
- The ensuite has not got a non slip floor.
- There is an emergency alarm within the ensuite.
- The emergency pull cord alarm is within reach and fully functional.
- The emergency alarm rings to reception.
- There is a flashing fire alarm beacon within the ensuite.
- Disposal facilities are available.
- There is a/are general domestic waste disposal units.
- There is a mirror.
- The mirror is not placed at a lower level or at an angle for ease of use.
- There is a shelf immediately next to or behind the toilet.
- The shelf is not between 90cm and 100cm.
- There is a wash basin.
- The wash basin cannot be reached from seated on the toilet.
- The wash basin is placed higher than 74cm (2ft 5in).
- The height of the wash basin is 75cm.
- There are vertical wall-mounted grab rails on both sides of the wash basin.
- The tap type is lever.
- There is a mixer tap.
- There is not a soap dispenser.

#### Toilet Details

Collapse -

- The height of the toilet seat above floor level is 52cm (1ft 8in).
- The toilet has a lid.

- There is a lateral transfer space.
- As you face the toilet pan the transfer space is on the left.
- The lateral transfer space is 118cm (3ft 10in).
- There is a flush, however it is not on the transfer side.
- There is not a spatula type lever flush.
- There is a dropdown rail on the transfer side.
- There is a/are wall-mounted grab rail(s) available.
- As you face the toilet, the wall mounted grab rails are on the right.
- There is not a vertical wall-mounted grab rail on the transfer side.
- There is a horizontal wall-mounted grab rail on the opposite side of the seat to the transfer space.
- There is a toilet roll holder.
- The toilet roll holder can be reached from seated on the toilet.
- The toilet roll holder is not placed higher than 100cm (3ft 3in).
- The height of the toilet roll holder is 86cm (2ft 10in).

#### Bath Details

Collapse -

- The ensuite has a lowered bath.
- The height of the side of the bath from floor level is 44cm (1ft 5in).
- The tap type is lever.
- There is a mixer tap.
- There is a shower over the bath.
- The shower head is height adjustable.
- The shower control type is lever.
- There is a/are wall-mounted grab rail(s) available for the bath.

#### Colour Contrast and Lighting

Collapse -

- The colour contrast between the external hotel room door and wall is poor.
- The colour contrast between the internal hotel room door and wall is poor.
- The colour contrast between the hotel room walls and floor is good.
- The colour contrast between the external ensuite door and wall is poor.
- The colour contrast between the internal ensuite door and wall is poor.
- The colour contrast between the ensuite walls and floor is good.
- The colour contrast between the drop down rail(s) and wall is good.
- The colour contrast between the wall-mounted grab rail(s) and wall is good.
- The contrast between the wash basin wall-mounted grab rail(s) and wall is good.
- The colour contrast between the bath wall-mounted grab rails and wall is good.
- The toilet seat colour contrast is poor.
- The lighting levels in the room are low.
- The lighting levels in the ensuite are good.



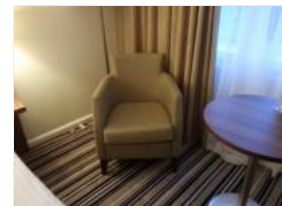
1



2



3



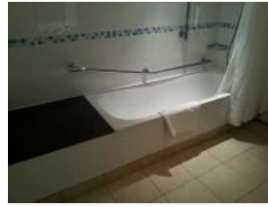
4



5



6



7



8

## Standard Room(s) (Room 225)

Collapse -

## Bedroom Features

Collapse -

- The room surveyed is located on the second floor, to the left as you enter the hotel entrance.
- The room surveyed at the time of the visit was Room 225.
- There is step free access to the room surveyed.
- There is numbered signage on or near the room door.
- The width of the door is 70cm (2ft 4in).
- The bed type is double.
- The height of the bed is 58cm (1ft 11in).
- The measurement between the bed base and floor is 13cm (5in).
- Light switches are not within 120cm (3ft 11in) from floor level.
- There is not an emergency alarm in the room.
- There is not a flashing fire alarm beacon within the room.
- The type of facilities within the ensuite include; a toilet, a wash basin, a bath and a shower.
- The ensuite door opens inwards.
- The width of the door to the ensuite is 71cm (2ft 4in).
- There is not an emergency alarm within the ensuite.
- There is not a flashing fire alarm beacon within the ensuite.
- The tap type is lever.
- There is a mixer tap.
- Wall-mounted grab rails are available for the bath and shower.

## Colour Contrast and Lighting

Collapse -

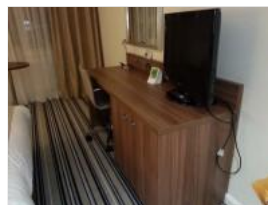
- The colour contrast between the external hotel room door and wall is good.
- The colour contrast between the internal hotel room door and wall is good.
- The colour contrast between the hotel room walls and floor is good.
- The colour contrast between the external ensuite door and wall is fair.
- The colour contrast between the internal ensuite door and wall is poor.
- The colour contrast between the walls and floor in the ensuite is fair.
- The colour contrast between the grab rails and wall is good.
- The lighting levels in the room are low.
- The lighting levels in the ensuite are good.



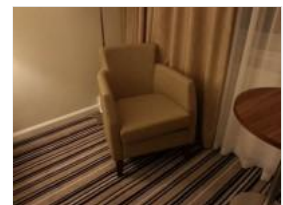
1



2



3



4



5



6



7



8

## Conference / Meeting Facilities (Yeoman A and B)

Collapse -

- Conference/meeting facilities are available.
- The conference/meeting facilities are located on the second floor, to the right as you enter the hotel entrance.
- There is step free access to the conference/meeting facilities.
- The door opening width(s) is/are 75cm+ for the room(s).
- There is a hearing assistance system for the room(s).
- There are no chairs with armrests on both sides within the room(s).
- There is sufficient space for a wheelchair user to manoeuvre within the room(s).
- The lighting levels in the room(s) are adjustable.

### Comments

Collapse -

- This room has a partition wall.
- If the partition is closed, this room becomes Yeoman A.
- If the partition is opened the room is doubled in size and becomes Yeoman A and B.



1



2



3



4

## Other Floors

Collapse -

### Stairs

Collapse -

- Stairs can be used to access other floors.
- The stairs are for public use.
- The stairs are located in the corridor to the left of the main reception desk.
- The stairs are approximately 21m from the hotel entrance.
- Signs indicating the location of the stairs are not available from the entrance.
- There are manual, heavy, double doors to enter and exit the stairwell on all floors.
- The floors which are accessible by stairs are 1, 2 and 3.
- There are 15+ steps between floors.
- The height of the step(s) is/are between the recommended 15cm and 18cm.
- The going of the step(s) is/are not between the recommended 30cm and 45cm.
- The steps are clearly marked.
- There is a/are handrail(s) at the step(s).
- The steps have a handrail on both sides.
- Handrails are at the recommended height (90cm-100cm).
- Handrails do cover the flight of stairs throughout its length.
- Handrails are easy to grip.
- Handrails do not extend horizontally beyond the first and last steps.

- There is a landing.
- Clear signs indicating the facilities on each floor are provided on landings.
- The lighting levels at the steps are varied.

## Other Information

Collapse -

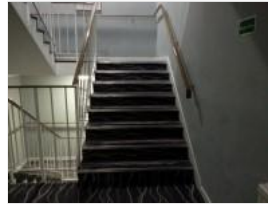
- The area(s) on the floors which are not accessible is/are Rooms 101 to 141, the fitness suite and the Harford Suite on the first floor and Rooms 301 to 341 on the third floor.



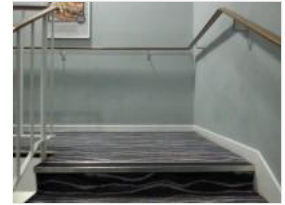
1



2



3



4

## Standard Room(s) (Executive Room 332)

Collapse -

## Bedroom Features

Collapse -

- The room surveyed is located on the third floor along the front left corridor via the steps.
- The room surveyed at the time of the visit was Room 332.
- There is stepped access to the room surveyed.
- There is numbered signage on or near the room door.
- The width of the door is 69cm (2ft 3in).
- The bed type is double.
- The height of the bed is 58cm (1ft 11in).
- .
- The measurement between the bed base and floor is 13cm (5in).
- Light switches are not within 120cm (3ft 11in) from floor level.
- There is not an emergency alarm in the room.
- There is not a flashing fire alarm beacon within the room.
- The type of facilities within the ensuite include; a toilet, a wash basin and a shower.
- The ensuite door opens inwards.
- The width of the door to the ensuite is 71cm (2ft 4in).
- There is not an emergency alarm within the ensuite.
- There is not a flashing fire alarm beacon within the ensuite.
- The tap type is lever.
- There is a mixer tap.

## Colour Contrast and Lighting

Collapse -

- The colour contrast between the external hotel room door and wall is poor.
- The colour contrast between the internal hotel room door and wall is poor.
- The colour contrast between the hotel room walls and floor is good.
- The colour contrast between the external ensuite door and wall is fair.
- The colour contrast between the internal ensuite door and wall is poor.
- The colour contrast between the walls and floor in the ensuite is good.
- The lighting levels in the room are low.
- The lighting levels in the ensuite are good.

## Comments

Collapse -

- There is a deep step to enter the shower created by the shower tray.



1



2



3



4



5



6



7



8



9

## Accessible Toilet(s)

Collapse -

- There is an/are accessible toilet(s) for public use.

### Location and Access

Collapse -

- The accessible toilet surveyed is not for the sole use of disabled people.
- This accessible toilet is located in the corridor to the left of reception.
- This accessible toilet is approximately 8m (8yd 2ft) from the hotel entrance.
- There is ramped/sloped access to the accessible toilet.

### Features and Dimensions

Collapse -

- This is a shared toilet.
- A key is not required for the accessible toilet.
- There is tactile and pictorial signage on or near the toilet door.
- The door opens outwards.
- The door is heavy.
- The door is locked by a sliding bolt.
- The width of the accessible toilet door is 86cm (2ft 10in).
- The dimensions of the accessible toilet are 169cm x 174cm (5ft 7in x 5ft 9in).
- The accessible toilet does not have an unobstructed minimum turning space of 150cm x 150cm.
- The toilet has not got a non slip floor.
- There is a lateral transfer space.
- As you face the toilet pan the transfer space is on the left.
- The lateral transfer space is 102cm (3ft 4in).
- There is a flush on the transfer side.
- There is not a spatula type lever flush.
- There is a dropdown rail on the transfer side.

- There is an emergency alarm.
- The emergency pull cord alarm is not fully functional.
- The alarm was out of reach (higher than 10cm (4") from floor) when surveyed.
- There is not a flashing fire alarm beacon within the toilet.
- Disposal facilities are available in the toilet.
- There is a/are female sanitary, non-infectious waste and waste paper pedal bin disposal units.
- There is a/are coat hook(s).
- The height of the coat hook is 171cm from the floor.

#### Position of Fixtures

Collapse -

- There is a/are wall-mounted grab rail(s) available.
- As you face the toilet the wall-mounted grab rail(s) is/are on both sides.
- There is a vertical wall-mounted grab rail on the transfer side.
- There is a horizontal wall-mounted grab rail on the opposite side of the seat to the transfer space.
- There is a mirror.
- The mirror is not placed at a lower level or at an angle for ease of use.
- There is a shelf next to the toilet.
- The shelf is not between 90cm and 100cm.
- The toilet has a lid.
- The height of the toilet seat above floor level is 45cm (1ft 6in).
- There is a toilet roll holder.
- The toilet roll holder can be reached from seated on the toilet.
- The toilet roll holder is placed higher than 100cm (3ft 3in).
- The height of the toilet roll holder is 109cm (3ft 7in).
- There is a wash basin.
- The wash basin can be reached from seated on the toilet.
- The wash basin is placed higher than 74cm (2ft 5in).
- The height of the wash basin is 75cm (2ft 6in).
- There is a vertical wall-mounted grab rail on the left hand side of the wash basin.
- The wash basin tap type is lever.
- There is a mixer tap.
- There is a soap dispenser.
- The soap dispenser can be reached from seated on the toilet.
- The height of the soap dispenser is 95cm.
- There is a towel dispenser.
- The towel dispenser can be reached from seated on the toilet.
- The towel dispenser is not placed higher than 100cm (3ft 3in).
- There is not a hand dryer.

#### Colour Contrast and Lighting

Collapse -

- The contrast between the external door and wall is good.
- The contrast between the internal door and wall is good.
- The contrast between the dropdown rail(s) and wall is poor.
- The contrast between the wall-mounted grab rail(s) and wall is poor.
- The toilet seat colour contrast is poor.
- The contrast between the walls and floor is poor.
- The lighting levels are low.

#### Baby Changing Facilities

Collapse -

- Baby changing facilities are located within the accessible toilet.
- The baby change table is not set against the wall, permanently fixed at 75cm from the floor.